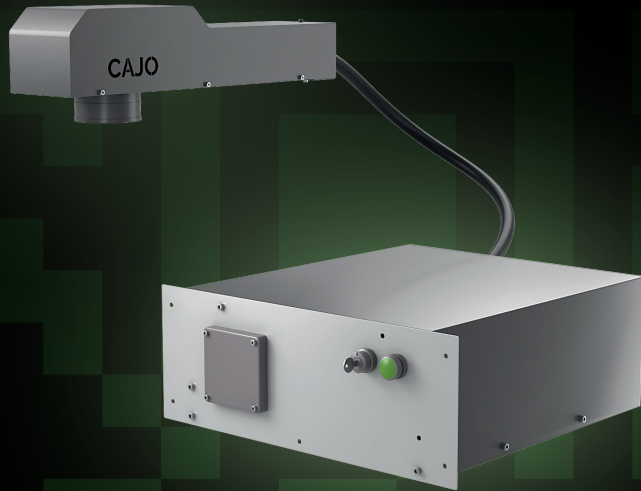


CAJO TAILOR FIBER™

Cajo Tailor
Presentation



Cajo Tailor Fiber™ is a laser marker that can be integrated to a production line or to a device. It is designed for 24/7 use in production facilities, where high performance and reliability are required. It efficiently replaces traditional marking systems, such as ink jets. Electrical and mechanical integrability as well as the system user experience and usability are the best available at the market. Cajo Tailor Fiber™ is one of the longest-lasting laser marking devices on the market.

Cajo Tailor Fiber™ laser markers enables precise and durable markings with repeatedly same quality. It is suitable for permanent marking of products and semi-products made of, for example, metals, plastics or coated plastics and metals. The Advanced model has wider adjustment possibilities, which enables marking of challenging materials such as soft polymers and light-reflecting metals (copper, brass).

Cajo Tailor Fiber™ can be operated with CajoSuite™ PC software or with CajoSmart™ embedded software. Easy-to-use marking software CajoSuite™, makes the editing and customization of marking content easy and flexible. The software makes it possible to add variable marking information, such as logos, serial numbers, barcodes, QR codes, data matrices and other product information.

CajoSmart™ is embedded software which enables high speed on-the-fly marking without PC. It is designed to be used in 24/7 production lines where high performance and reliability is required. CajoSmart™ also supports variable marking content and it has an option for touch screen interface.

Both control solutions (CajoSuite and CajoSmart) provide software interfaces which enables device to be controlled and monitored from another system such as MES, PLC, or computer.

TECHNICAL DATA

Laser type	Pulsed fiber laser
Wavelength	1060-1080 nm
Laser class	Class 4
Laser power	20 W / 50 W / 100 W (Fiber) 20 W (Advanced)
Beam guiding	High-speed optical galvanometers
Marking speed (max)	500 characters/s or 7 m/s Can be upgraded up to 1000 characters/s or 14 m/s
Marking field	175 x 175 / 220 x 220 mm
Max size for the markable part	Scalable
Preview system	Integrated red light pointer (class 2)
Cooling	Air
Power supply	110-240 V / 50-60 Hz
Power consumption	20 W Fiber: 170 W 50 W Fiber: 260 W 100 W Fiber: 400 W 20 W Advanced: 130 W
Marking software	CajoSuite CajoSmart
Dimensions and weights (H x W x L)	Device enclosure 178 x 482 x 560 mm (15-20 kg) Marking head 155 x 131 x 545 mm (7 kg)
Ambient conditions	10-30 °C , humidity ≤80 %
Connectivity	1 x I/O (6 x IN 24 VDC, 6 x OUT 24 VDC) 1 x RS-422 (incremental encoder input) 1 x LAN (for control)
Safety interlock	Duplicated safety contacts with feedback
Computer recommendations for Tailor (not included in standard delivery)	
Processor	Intel i5
Memory	4 GB
Hard drive	64 GB
Operation system	Windows 7 or Windows 10
Interfaces	1 x LAN