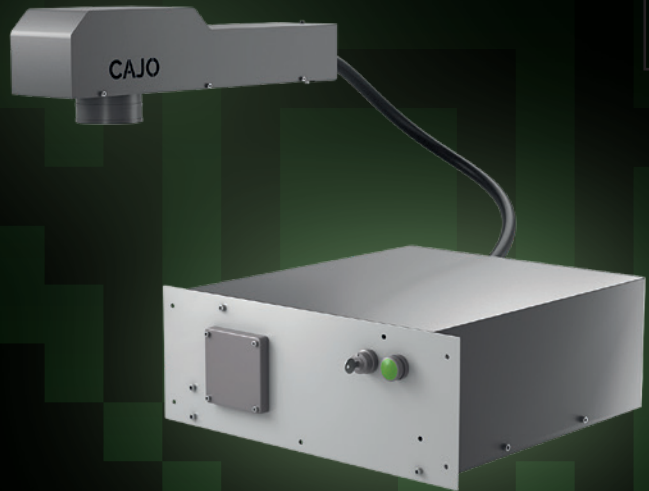


CAJO TAILOR DEEP ENGRAVER™



Cajo Tailor Deep Engraver™ is a laser system that can be integrated to a production line or to a device. The system is designed for deep engraving of metals. The deep engraved markings enable readability also on metals with flake formation and rust, which makes Cajo Tailor Deep Engraver an optimal marking solution for all the applications in the first stages of metal processing chain (marking of plates, rolls, coils etc.)

Pre-defined marking library for selected materials is built into the system. The user interface allows flexible customization of marking content, for example, serial numbers, bar codes, QR codes, data matrices and other product information. Cajo Tailor Deep Engraver™ is a long-lasting solution with low maintenance.

TECHNICAL DATA

Laser type	Pulsed fiber laser
Wavelength	1060-1080 nm
Beam guiding	High-speed optical galvanometers
Marking speed (max)	350 characters/s
Marking field	175 x 175 mm
Max size for the markable part	Scalable
Preview system	Integrated red light pointer
Cooling	Air
Power supply	110-240 V / 50-60 Hz
Marking software	CajoMark, CajoCad
Dimensions and weights (H x W x L)	Device enclosure 800 x 600 x 1000 mm (120 kg) Marking head 280 x 150 x 650 mm (14 kg)
Ambient conditions	10-30 °C , humidity ≤80 %
Connectivity	1 x I/O (2 x IN 5 VDC, 4 x OUT max. 24 VDC) 1 x USB (for control computer)

PC Recommendations (not included in standard delivery)

Processor	Intel i5
Memory	4 GB
Hard drive	64 GB
Operation system	Windows 7 or Windows 10
Interfaces	1 x USB